



# Rocky Mountain Snow Guards Inc

ROCKY MOUNTAIN SNOW GUARDS  
4231 S. NATCHES COURT, UNIT C  
ENGLEWOOD, CO 80110  
PHONE: (877) 414-7606  
FAX: (720) 387-8361  
[www.rockymountainsnowguards.com](http://www.rockymountainsnowguards.com)

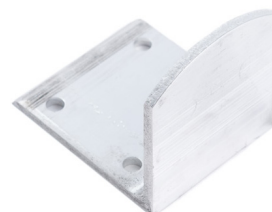
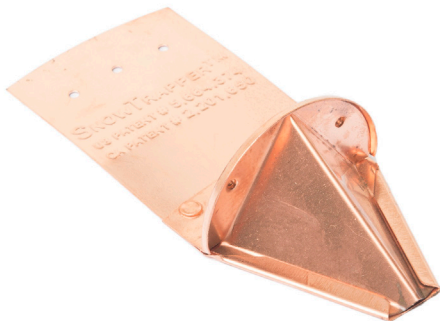
## INSTALLATION INSTRUCTIONS FOR SNOW GUARDS ON METAL PANEL ROOFS

### **Mechanically Fastened: (recommended for painted and mill finish aluminum)**

1. Follow recommended layout from Rocky Mountain Snow Guards and mark panel.
2. Apply appropriate sealant under the snow guard.
3. Attach ST6 and RG5 with 2 fasteners. Attach RGW and RGN with 4 fasteners.  
We recommend the Wood Binder Eclipse Screw for a watertight installation.

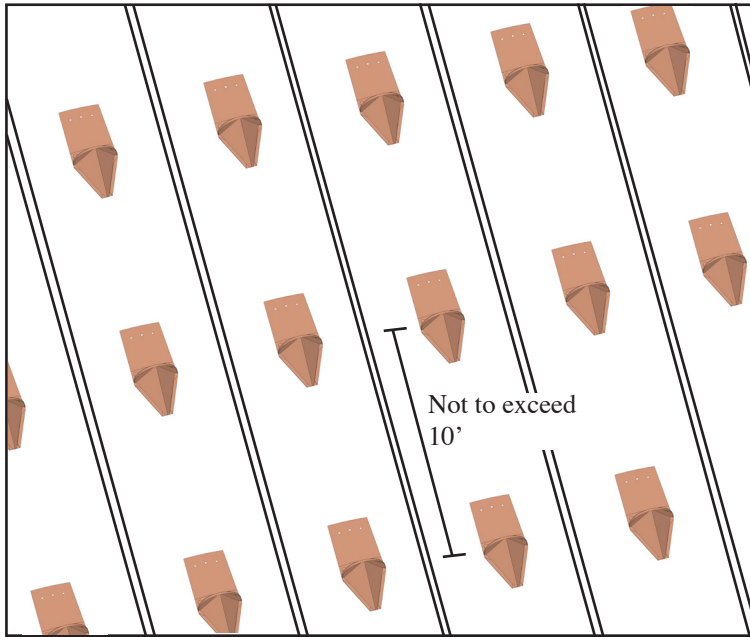
### **Soldering copper ST6 or RG5 Snow Guard to the roof panel:**

1. Flux and tin the bottom of the snow guard.
2. Follow recommended layout from Rocky Mountain Snow Guards.
3. Flux and tin the snow guard location on the panel.
4. Heat the snow guard in place. Make sure solder is sufficiently melted to insure a strong bond.



# RECOMMENDED PATTERN FOR SNOW GUARDS ON METAL PANEL ROOFS

## Panels Less than 16" Wide:



## Snow guard layout for metal panel roofs

Contact Rocky Mountain Snow Guards for layout, or visit [www.rockymountainsnowguards.com](http://www.rockymountainsnowguards.com) to request a recommended layout and quote online.

For metal panels that are less than 16" wide, use 1 snow guard per panel per row.

- For metal panels that are 16" to 24" wide, use 2 (two) snow guards per panel per row. For other metal panels spacing should be no more than 12" o/c horizontally.

- Row Spacing will vary. Contact Rocky Mountain Snow Guards for a custom layout.

## Panels 16" - 24" Wide:

